



Autumn 2014 Newsletter

Promote yourself, your research, and your institution

Be proactive in publicizing your research with tools such as ResearcherID, ORCID (Open Researcher and Contributor ID), and Google Scholar Citations. Your publications are your primary product. They disseminate your research findings, and can be used to evaluate your, and your institution's, impact on scientific endeavors. Getting credit for all of your research output can be challenging in today's culture of information overload, especially if you have changed your name (e.g. marriage or divorce), have a common name (e.g. Smith, Johnson, Williams), have a similar name to someone else working in your field, or have been published or cited under various forms of your name (e.g. J.A.S. Sorensen, J.Aa.S. Sorensen, J. Age S. Sorensen, J. Aage S. Sorensen).

ResearcherID, ORCID, and Google Scholar Citations are three services that provide assistance in managing your identity, and creating an online profile to highlight your research and its impact. Both ResearcherID and ORCID provide you with a unique number that can be associated with your publications, much the same way a DOI works to uniquely identify an article, or an ISSN identifies a journal. Google Scholar Citations does not provide a unique identifier, but does allow you to self-identify your publications within the Google Scholar database. Both ResearcherID and Google Scholar Citations provide citation metrics via your user profile, while ORCID links to other resources like ResearcherID (Web of Science).

All three services are freely available on the web and allow users to create profiles including a bibliography, job title, institutional affiliations (past and present), websites and other biographical information. They also include privacy settings that allow you to choose what information is made public, and are portable, traveling with you throughout your career.

ORCID in a nutshell

- Provides a unique identifier which can be used to coordinate publications across vendors (ResearcherID, DataCite, Scopus Author Identifier) and document types
- Import published works into ORCID using CrossRef, or create individual records directly in the ORCID interface
- Does not include citation metrics, instead links to other resources like ResearcherID
- Use ORCID with sites like impactstory.org to expand your ability to collect altmetrics
- Handles a variety of scholarly output formats, articles, book chapters, datasets, images, research grants, and more

Bottom Line: ORCID is becoming the standard researcher identifier to combine and coordinate all other systems. Many publishers are beginning to require ORCID to identify authors during the publication process. It has great potential for future development, so being an early adopter is a good idea.

ResearcherID in a nutshell

- Provides a unique identifier that ensures all of your papers are attributed to you
- Specific to Thomson Reuters and Web Of Science
- Easily linked to ORCID
- Includes citation metrics derived from Web of Science, a reputable provider of standardized metrics
- Citation metrics include journal articles & conference papers
- Easy method for importing your articles into ResearcherID from Web of Science, EndNote, and RIS file
- Only those items in the Web of Science database are included in the citation metric analysis
- Automatically updates citation counts as new data is added to Web of Science
- Ability to create a badge (icon), to post on websites to advertise your ResearcherID profile

Bottom Line: ResearcherID makes it easy to track and communicate your own scientific impact with citation metrics, helps connect possible collaborators, simplifies publications and statistics gathering for the lab review process.

Don't Miss these ResearcherID Webinars!

Thursday October 30, 2pm,
DSRC 2A-305

Tuesday, November 4, 10am,
Bldg. 1, 1107

How to create and link profiles for ResearcherID and ORCID

ResearcherID and ORCID allow you to link profiles. Benefits include sharing your author and research contributions between ResearcherID and ORCID, expanding your network of researchers in your field, and improving your impact metrics.

Creating & Using your ResearcherID Profile

Access ResearcherID at <http://www.researcherid.com>

- ◆ If you already have a Web of Science or EndNote Basic username/password, you can use it to sign in
- ◆ If not, click “Join Now”

[Watch this demonstration](#) to learn how to create your profile

The following tutorials provide valuable information about using your ResearcherID account:

- ◆ [Adding and editing publications](#)
- ◆ [ResearcherID and ORCID integration](#)

Creating & Using your ORCID Profile

To register for ORCID visit <http://orcid.org/>

- ◆ Click “Register Now!” on the ORCID home page
- ◆ Enter basic information, and create password
- ◆ Select your [default privacy](#) setting
- ◆ Check the box indicating you agree with the terms of use
- ◆ Click “Register”

Once registered:

- ◆ Create your profile by adding your biographical information in the areas provided
- ◆ Add your publications by entering manually or linking to them from a list of sources including:
 - CrossRef Metadata Search ([instructions](#))
 - DataCite
 - ResearcherID

If you have questions about setting up either a ResearcherID or ORCID account contact your library liaison.

Google Scholar Citations in a nutshell

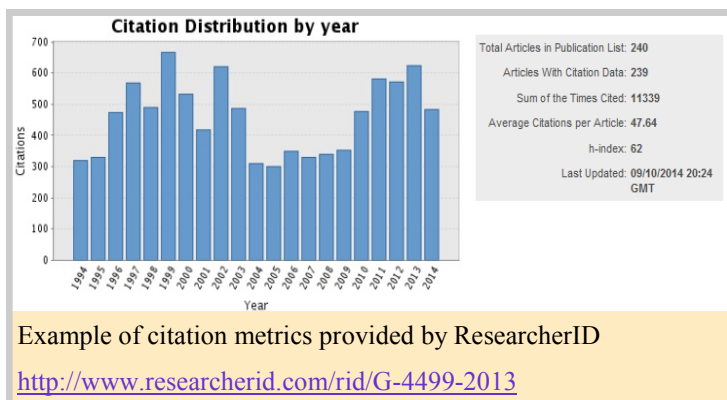
- Does not provide a unique identifier, but allows you to claim your works via Google Scholar
- Provides citation metrics derived from the Google Scholar database and includes citations to books, book chapters, technical reports, and conferences

Bottom Line: Provides an additional point of reference for citation counts that may be helpful for those formats not currently covered by the library's subscription to Web of Science, like books, technical reports and data-sets. Google Scholar Citations profiles can be searched via Google, and may help publicize your work to the larger scientific community.

H-index and i10 index measure your scholarly research

An h-index is a statistic that measures the broad impact of your publications. It was developed by the physicist J.E. Hirsch in 2005. The ResearcherID website defines the metric as: "h is the number of articles greater than h that have at least h citations. For example, an h-index of 20 means that there are 20 items that have 20 citations or more."

The advantage of using this method of assessing your work is that it combines your productivity, or number of papers, with their impact, or number of times cited. Because different disciplines use varying types of publications and have different citation rates, you should only compare your h-index with those of others within your discipline. [This video](#) shows how to calculate your h-index via Web of Science.

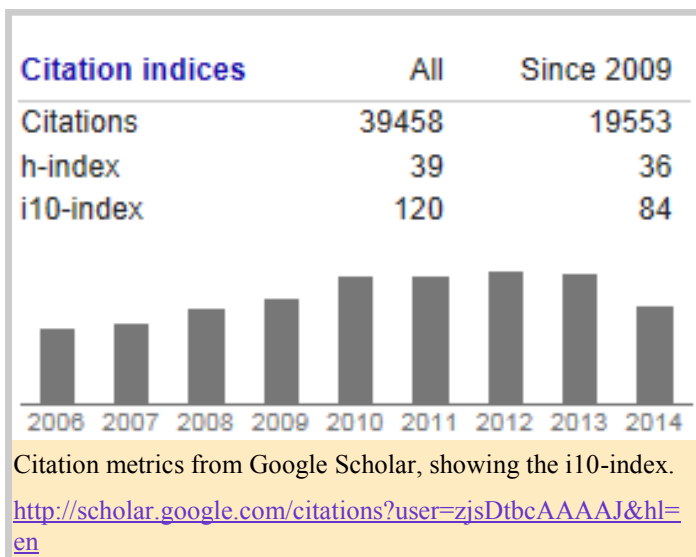


Example of citation metrics provided by ResearcherID

<http://www.researcherid.com/rid/G-4499-2013>

Both ResearcherID and Google Citations will automatically calculate an author's h-index. ResearcherID uses the Web of Science (WoS) database for its h-index calculation, whereas Google Citations pulls from the Google Scholar database. Web of Science's database consists of citations from over 12,000 high impact journals, including Open Access journals and over 150,000 conference proceedings. Google Scholar does not filter for quality or duplicate citations but contains many items not indexed in WoS, such as theses, books, and papers from online repositories and professional societies.

The i10 index was developed by Google Scholar. It is the number of publications indexed with at least 10 citations. It is easy to calculate and includes publications that are not indexed by Web of Science. Use Google Citations to calculate both your h-index and i10 index.



Library Liaison News — V. 3, Issue 2 — Autumn 2014

Selected New Books for NOAA/NGDC

Print

Branch

QA76.9.C65 .A87 2012. **Assessing the reliability of complex models: mathematical and statistical foundations of verification, validation, and uncertainty quantification** / National Research Council of the National Academies. ([More Info](#))

QC809 .E55 .F54 2013. **Cosmic electrodynamics: electrodynamics and magnetic hydrodynamics of cosmic plasmas** / Gregory D. Fleishman, Igor N. Toptygin. ([More Info](#))

QC981.8 .C5 .S25 2013. **Satellite-based applications on climate change** / John J. Qu, et al, eds. ([More Info](#))

QC996 .D37 2013. **Data assimilation for atmospheric, oceanic and hydrologic applications. Vol. II** / Seon Ki Park, Liang Xu, eds. ([More Info](#))

QE33.2.M3 .F73 2013. **Special functions of mathematical (geo-)physics** / Willi Freeden, Martin Gutting. ([More Info](#))

Main

HF5718.22 .S58 2012. **Small message, big impact: the elevator speech effect** / Terri L. Sjodin. ([More Info](#))

HF5718.22 .W65 2010. **The Wall Street journal guide to information graphics: the dos and don'ts of presenting data, facts, and figures** / Dona M. Wong. ([More Info](#))

Q224.5 .D38 2013. **Data provenance and data management in eScience** / Qing Liu, et al, eds. ([More Info](#))

QA37.3 .A74 2013. **Mathematical methods for physicists: a comprehensive guide** / George B. Arfken, et al. 7th ed. ([More Info](#))

QA76.73 .J38 .M87 2013. **Interactive data visualization for the web** / Scott Murray. ([More Info](#))

Ebooks

Big data : techniques and technologies in geoinformatics / edited by Hassan A. Karimi. 2014. ([Full-text Access](#))

Designing data visualizations / Noah Iliinsky, Julie Steele eds. 2013 ([Full-text Access](#))

Earthquakes : models, statistics, testable forecasts / Yan Y. Kagan. 2014. ([Full-text Access](#))

Essential maths for geoscientists : an introduction / Paul I. Palmer. 2014. ([Full-text Access](#))

Excel simulations / Gerard M. Verschuuren. 2014. ([Full-text Access](#))

Extreme natural hazards, disaster risks and societal implications / Alik Ismail-Zadeh, et al. eds. 2014. ([Full-text Access](#))

Global urban monitoring and assessment through earth observation / Qihao Weng. Ed. 2014. ([Full-text Access](#))

Making sense of data I : a practical guide to exploratory data analysis and data mining / Glenn J. Myatt, Wayne P. Johnson. 2014. ([Full-text Access](#))

Mapping in the cloud / Michael P. Peterson. 2014 ([Full-text Access](#))

Mathematical techniques in GIS / Peter Dale. 2014. ([Full-text Access](#))

Modeling the ionosphere-thermosphere system / Joseph Huba, et al. 2014. ([Full-text Access](#))

R data analysis without programming / David W. Gerbing. 2014 ([Full-text Access](#))

Make a recommendation:

<http://library.blrdoc.gov/requests/bookrec.html>

Locations

Main: Bldg1, 1202 / 303-497-3271
Branch: DSRC, 2C407 / 303-497-6742

Hours

8am-4:30pm Mon-Fri

Website

<http://library.blrdoc.gov>

Reference/Inquiries

BoulderLabs.Ref@noaa.gov
Liaison: joan.s.segal@noaa.gov, x5550