

## Autumn 2014 Newsletter

### Promote yourself, your research, and your institution

Be proactive in publicizing your research with tools such as ResearcherID, ORCID (Open Researcher and Contributor ID), and Google Scholar Citations. Your publications are your primary product. They disseminate your research findings, and can be used to evaluate your, and your institution's, impact on scientific endeavors. Getting credit for all of your research output can be challenging in today's culture of information overload, especially if you have changed your name (e.g. marriage or divorce), have a common name (e.g. Smith, Johnson, Williams), have a similar name to someone else working in your field, or have been published or cited under various forms of your name (e.g. J.A.S. Sorensen, J.Aa.S. Sorensen, J. Age S. Sorensen, J. Aage S. Sorensen).

ResearcherID, ORCID, and Google Scholar Citations are three services that provide assistance in managing your identity, and creating an online profile to highlight your research and its impact. Both ResearcherID and ORCID provide you with a unique number that can be associated with your publications, much the same way a DOI works to uniquely identify an article, or an ISSN identifies a journal. Google Scholar Citations does not provide a unique identifier, but does allow you to self-identify your publications within the Google Scholar database. Both ResearcherID and Google Scholar Citations provide citation metrics via your user profile, while ORCID links to other resources like ResearcherID (Web of Science).

All three services are freely available on the web and allow users to create profiles including a bibliography, job title, institutional affiliations (past and present), websites and other biographical information. They also include privacy settings that allow you to choose what information is made public, and are portable, traveling with you throughout your career.

#### ORCID in a nutshell

- Provides a unique identifier which can be used to coordinate publications across vendors (ResearcherID, DataCite, Scopus Author Identifier) and document types
- Import published works into ORCID using CrossRef, or create individual records directly in the ORCID interface
- Does not include citation metrics, instead links to other resources like ResearcherID
- Use ORCID with sites like [impactstory.org](http://impactstory.org) to expand your ability to collect altmetrics
- Handles a variety of scholarly output formats, articles, book chapters, datasets, images, research grants, and more

**Bottom Line:** ORCID is becoming the standard researcher identifier to combine and coordinate all other systems. Many publishers are beginning to require ORCID to identify authors during the publication process. It has great potential for future development, so being an early adopter is a good idea.

## ResearcherID in a nutshell

- Provides unique identifier that ensures all of your papers are attributed to you
- Specific to Thomson Reuters and Web Of Science
- Easily linked to ORCID
- Includes citation metrics derived from Web of Science, a reputable provider of standardized metrics
- Citation metrics include journal articles & conference papers
- Easy method for importing your articles into ResearcherID from Web of Science, EndNote, and RIS file
- Only those items in the Web of Science database are included in the citation metric analysis
- Automatically updates citation counts as new data is added to Web of Science
- Ability to create a badge (icon), to post on websites to advertise your ResearcherID profile

**Bottom Line:** ResearcherID makes it easy to track and communicate your own scientific impact with citation metrics, helps connect possible collaborators, simplifies publications and statistics gathering for the lab review process.

## Don't Miss these ResearcherID Webinars!

Thursday October 30, 2pm,  
DSRC 2A-305

Tuesday, November 4, 10am,  
Bldg. 1, 1107

## How to create and link profiles for ResearcherID and ORCID

ResearcherID and ORCID allow you to link profiles. Benefits include sharing your author and research contributions between ResearcherID and ORCID, expanding your network of researchers in your field, and improving your impact metrics.

### Creating & Using your ResearcherID Profile

Access ResearcherID at <http://www.researcherid.com>

- ◆ If you already have a Web of Science or EndNote Basic username/password, you can use it to sign in
- ◆ If not, click “Join Now”

[Watch this demonstration](#) to learn how to create your profile

The following tutorials provide valuable information about using your ResearcherID account:

- ◆ [Adding and editing publications](#)
- ◆ [ResearcherID and ORCID integration](#)

### Creating & Using your ORCID Profile

To register for ORCID visit <http://orcid.org/>

- ◆ Click “Register Now!” on the ORCID home page
- ◆ Enter basic information, and create password
- ◆ Select your [default privacy](#) setting
- ◆ Check the box indicating you agree with the terms of use
- ◆ Click “Register”

Once registered:

- ◆ Create your profile by adding your biographical information in the areas provided
- ◆ Add your publications by entering manually or linking to them from a list of sources including:
  - CrossRef Metadata Search ([instructions](#))
  - DataCite
  - ResearcherID

If you have questions about setting up either a ResearcherID or ORCID account contact your library liaison.

## Google Scholar Citations in a nutshell

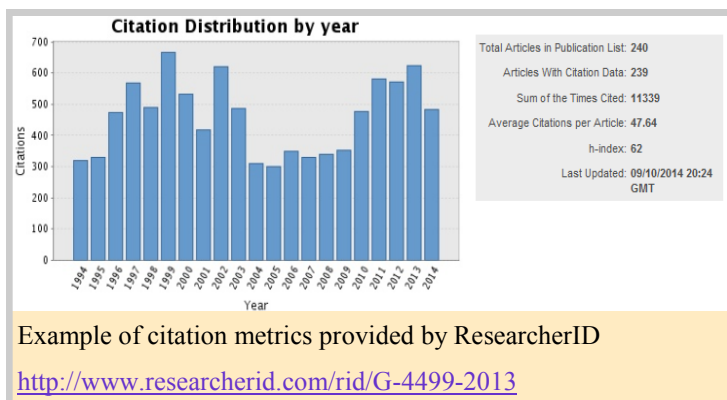
- Does not provide a unique identifier, but allows you to claim your works via Google Scholar
- Provides citation metrics derived from the Google Scholar database and includes citations to books, book chapters, technical reports, and conferences

**Bottom Line:** Provides an additional point of reference for citation counts that may be helpful for those formats not currently covered by the library's subscription to Web of Science, like books, technical reports and data-sets. Google Scholar Citations profiles can be searched via Google, and may help publicize your work to the larger scientific community.

## H-index and i10 index measure your scholarly research

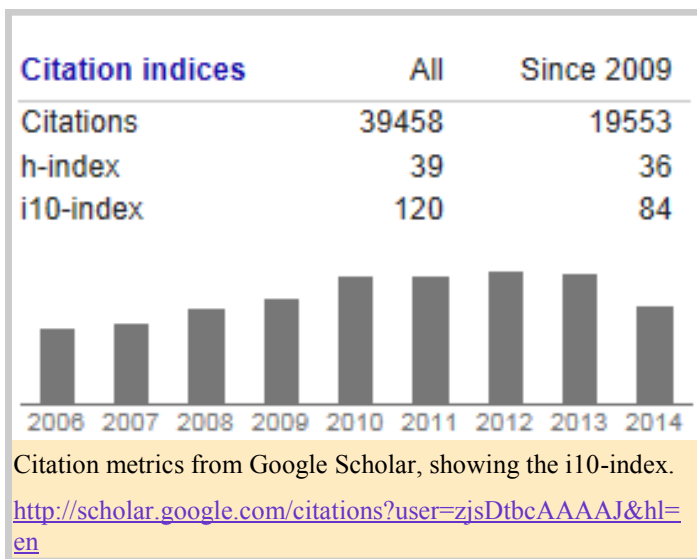
An h-index is a statistic that measures the broad impact of your publications. It was developed by the physicist J.E. Hirsch in 2005. The ResearcherID website defines the metric as: "h is the number of articles greater than h that have at least h citations. For example, an h-index of 20 means that there are 20 items that have 20 citations or more."

The advantage of using this method of assessing your work is that it combines your productivity, or number of papers, with their impact, or number of times cited. Because different disciplines use varying types of publications and have different citation rates, you should only compare your h-index with those of others within your discipline. [This video](#) shows how to calculate your h-index via Web of Science.



Both ResearcherID and Google Citations will automatically calculate an author's h-index. ResearcherID uses the Web of Science (WoS) database for its h-index calculation, whereas Google Citations pulls from the Google Scholar database. Web of Science's database consists of citations from over 12,000 high impact journals, including Open Access journals and over 150,000 conference proceedings. Google Scholar does not filter for quality or duplicate citations but contains many items not indexed in WoS, such as theses, books, and papers from online repositories and professional societies.

The i10 index was developed by Google Scholar. It is the number of publications indexed with at least 10 citations. It is easy to calculate and includes publications that are not indexed by Web of Science. Use Google Citations to calculate both your h-index



# Library Liaison News — V. 3, Issue 2 — Autumn 2014

## Selected New Books for Global Systems Division

### Print

#### Branch

GB1399.2 .S46 2013. **Flash floods: forecasting and warning** / Kevin Sene. ([More Info](#))

QC874.5 .D55 2013. **Nonlinear climate dynamics** / Henk A. Dijkstra. ([More Info](#))

QC880 .H65 2013. **An introduction to dynamic meteorology** / James R. Holton, Gregory J. Hakim, 5th ed. ([More Info](#))

QC942 .S48 2012. **Global tropical cyclogenesis** / Eugene A. Sharkov. ([More Info](#))

QC955 .B576 2013. **Severe convective storms and tornadoes: observations and dynamics** / H. B. Bluestein. ([More Info](#))

QC981.45 .P78 2013. **Statistical analysis of climate series: analyzing, plotting, modeling, and predicting with R** / Helmut Pruscha. ([More Info](#))

QC996 .D37 2013. **Data assimilation for atmospheric, oceanic and hydrologic applications. Vol. II** / Seon Ki Park, Liang Xu, editors. ([More Info](#))

QC997 .S46 2012. **Seasonal prediction : science applications, proceedings of the Seminar on Seasonal Prediction, 3-7 September 2012, European Centre for Medium-Range Weather Forecasts, Reading, UK.** ([More Info](#))

QE33.2.M3 .F73 2013. **Special functions of mathematical (geo)-physics** / Willi Freeden, Martin Gutting. ([More Info](#))

TA703.5 .I58 2013. **Geotechnical predictions and practice in dealing with geohazards** / Jian Chu, et al., editors. ([More Info](#))

### Main

Q224.5 .D38 2013. Q224.5 .D38 2013. **Data provenance and data management in eScience** / Qing Liu. ([More Info](#))

HF5718.22 .W65 2010. **The Wall Street journal guide to information graphics: the dos and don'ts of presenting data, facts, and figures** / Dona M. Wong. ([More Info](#))

QA76.73 .J38 .M87 2013. **Interactive data visualization for the web** / Scott Murray. ([More Info](#))

### Ebooks

**Aerosols : synthesis, optical properties and environmental implications** / Adam Yanick Pearson, editor. 2014 ([Full-text Access](#))

**Introduction to computational modeling using C and open-source tools** / Jose M. Garrido, 2013 ([Full-text Access](#))

**Introduction to numerical methods and analysis** / James F. Epperson. 2013 ([Full-text Access](#))

**Richly parameterized linear models: additive, time series, and spatial models using random effects** / James S. Hodges. 2013 ([Full-text Access](#))

**The Sage handbook of multilevel modeling** / Jeffrey Simonoff, et al., editors. ([Full-text Access](#))

**Statistical hypothesis testing with SAS and R** / Dirk Taeger, Sonja Kuhnt. 2014 ([Full-text Access](#))

### Make a recommendation:

<http://library.bldrdoc.gov/requests/bookrec.html>

## Contact the Library

### Locations

Main: 303-497-3271

Branch: 303-497-6742

### Hours

8am-4:30pm Mon-Fri

### Website

<http://library.bldrdoc.gov>

### Reference/Inquiries

BoulderLabs.Ref@noaa.gov

Liaison: mike.robinson@noaa.gov; x3003